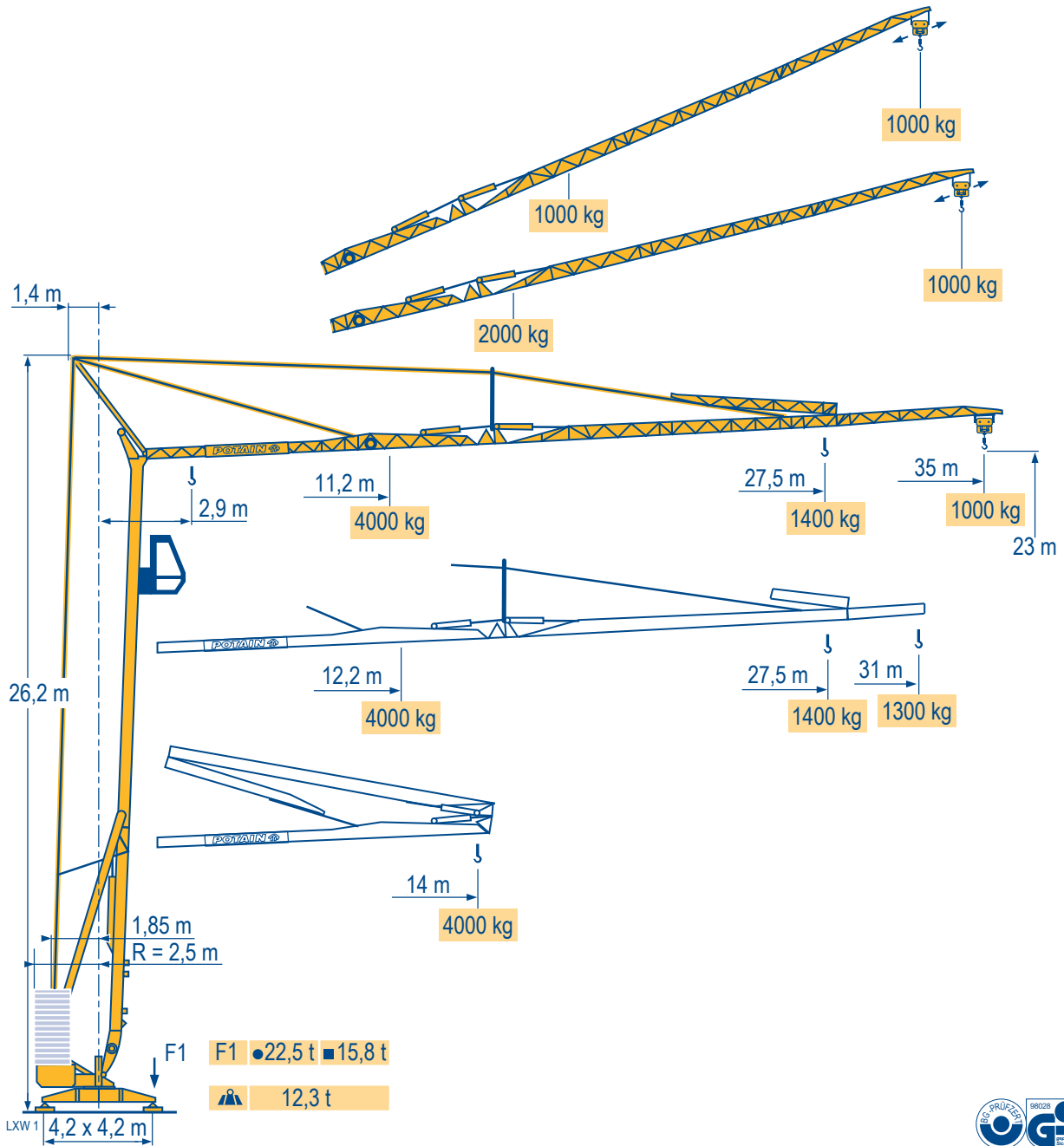


## HD 40 A



Courbes de charges  
Lastkurven  
Load diagrams  
Curvas de cargas  
Curve di carico  
Curva de cargas



35 m 2,9 ▶ 14 m  
4000 kg

31 m 2,9 ▶ 14 m  
4000 kg

|      |      |      |      |      |      |      |      |      |      |      |      |      |      |      |      |      |         |
|------|------|------|------|------|------|------|------|------|------|------|------|------|------|------|------|------|---------|
| 11,2 | 12   | 13   | 14   | 15   | 16   | 17   | 18   | 19   | 20   | 22   | 24   | 26   | 28   | 29   | 31   | 33   | 35 m    |
| 4000 | 3695 | 3350 | 3060 | 2810 | 2600 | 2415 | 2255 | 2115 | 1985 | 1770 | 1595 | 1445 | 1320 | 1265 | 1165 | 1080 | 1000 kg |

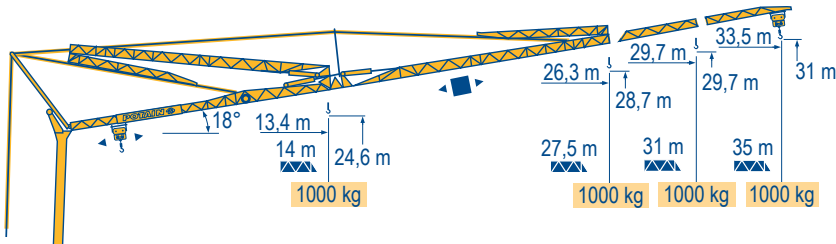
|      |      |      |      |      |      |      |      |      |      |      |      |      |      |         |
|------|------|------|------|------|------|------|------|------|------|------|------|------|------|---------|
| 12,2 | 13   | 14   | 15   | 16   | 17   | 18   | 19   | 20   | 22   | 24   | 26   | 28   | 29   | 31 m    |
| 4000 | 3700 | 3380 | 3110 | 2880 | 2680 | 2500 | 2345 | 2205 | 1965 | 1770 | 1610 | 1470 | 1410 | 1300 kg |



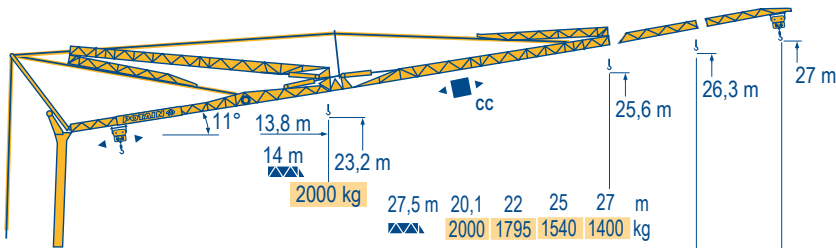
35/31 m 2,9 ▶ 14 m  
4000 kg

|      |      |      |      |      |      |      |      |      |      |      |      |         |
|------|------|------|------|------|------|------|------|------|------|------|------|---------|
| 11,6 | 12   | 13   | 14   | 15   | 16   | 17   | 18   | 19   | 20   | 22   | 24   | 26 m    |
| 4000 | 3820 | 3460 | 3165 | 2910 | 2690 | 2500 | 2335 | 2190 | 2060 | 1835 | 1650 | 1500 kg |

Flèche relevée  
Ausleger in Steilstellung  
Luffing jib  
Flecha izada  
Braccio impennato  
Lança inclinada



1000 kg 1000 kg 1000 kg 1000 kg



|        |      |      |      |      |              |
|--------|------|------|------|------|--------------|
| 27,5 m | 20,1 | 22   | 25   | 27   | m            |
| 2000   | 1795 | 1540 | 1400 | kg   |              |
| 31 m   | 21,3 | 22   | 25   | 27   | 30,5 m       |
| 2000   | 1930 | 1655 | 1510 | 1300 | kg           |
| 35 m   | 19,6 | 22   | 25   | 27   | 30 32 34,5 m |
| 2000   | 1740 | 1490 | 1355 | 1190 | 1100 1000 kg |

## HD 40 A

**POTAIN**



**F**

Chariot distributeur  
Chariot distributeur et courbes de charges



Réactions en service  
Réactions hors service

A vide sans lest (ni train de transport) avec flèche et hauteur maximum.



**D**

Verfahrbare Laufkatze

Verfahrbare Laufkatze und Lastkurven

Reaktionskräfte in Betrieb

Reaktionskräfte außer Betrieb

Ohne Last, Ballast (und Transportachse), mit Maximalausleger und Maximalhöhe.

**GB**

Traversing trolley

Traversing trolley and load diagrams

Reactions in service

Reactions out of service

Without load, ballast (or transport axles), with maximum jib and maximum height.

**E**

Carro distribuidor

Carro distribuidor y curvas de cargas

Reacciones en servicio

Reacciones fuera de servicio

Sin carga, sin lastre, (ni tren de transporte), flecha y altura máxima.

**I**

Carrellino distributore

Carrellino distributore e curve di carico

Reazioni in servizio

Reazioni fuori servizio

A vuoto, senza zavorra (ne assali di trasporto) con braccio massimo e altezza massima.

**P**

Carro distribuidor

Carro distribuidor e curva de cargas









Reações em serviço

Reações fora de serviço

Sem carga (nem trem de transporte)- sem lastro com lança e altura máximas.

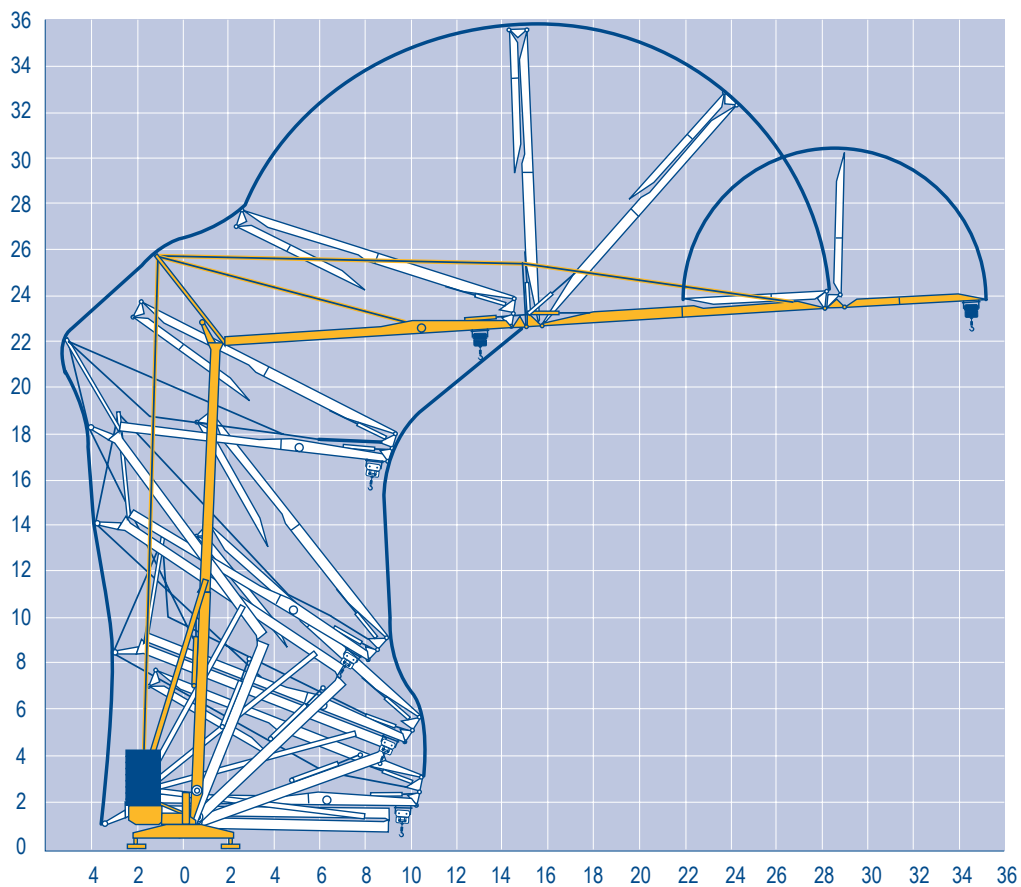
Mécanismes  
Antriebe  
Mechanisms  
Mecanismos  
Meccanismi  
Mecanismos

LXW 2

|   |           |  |               |      |      |  |      |      |      | ch - PS<br>hp | kW  |     |  |
|---|-----------|---|---------------|------|------|---|------|------|------|---------------|-----|-----|--|
|                | 15 LVF 10 | m/min   | 5             | 27   | 43   | 53  | 2,5  | 13,5 | 21,5 | 26,5          | 15  | 11  |  |
|   |           | kg  | 2000          | 2000 | 1250 | 1000  | 4000 | 4000 | 2500 | 2000          |     |     |  |
|                | 15 RPC 10 | m/min   | 9             | 27   | 54   |   | 4,5  | 13,5 | 27   |               | 15  | 11  |  |
|   |           | kg  | 2000          | 2000 | 1000 |   | 4000 | 4000 | 2000 |               |     |     |  |
|                | 3 D2 V5   | m/min   | 21 - 42       |      |      |   |      |      |      |               | 2,7 | 2   |  |
|                | RVF 2 30  | tr/min U/min<br>rpm   | 0 → 0,2 → 0,8 |      |      |   |      |      |      |               | 3   | 2,2 |  |
| CEI 38  IEC 38 |           |   |               |      |      |  |      |      |      |               |     |     |  |
| 400 V(+6% -10%) 50 Hz   |           |   |               |      |      | 15 LVF 10 : 20 kVA<br>15 RPC 10 : 20 kVA  |      |      |      |               |     |     |  |

Montage  
Montage  
Erection  
Montaje  
Montaggio  
Montagem

LXW 1



HD 40 A

**POTAIN** 



**F**  
Leverage  
Distribution  
Orientation

**D**

Heben  
Katzfahren  
Schwenken

**GB**

Hoisting  
Trolleying  
Slewing

**E**

Elevación  
Distribución  
Orientación

**I**

Sollevamento  
Distribuzione  
Rotazione

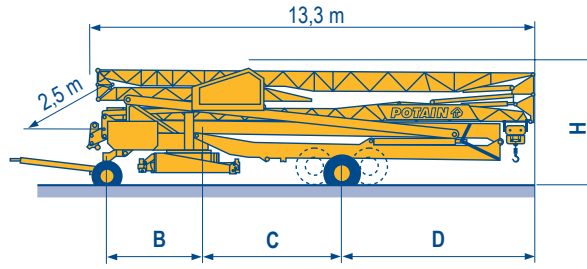
**P**

Elevação  
Distribuição  
Rotação

Transport  
 Transport  
 Transport  
 Transporte  
 Trasporto  
 Transporte

- DJ80/S120
- DJ100/S120
- DJ105/S125
- DJ126M/S125
- DJ126M/S215M

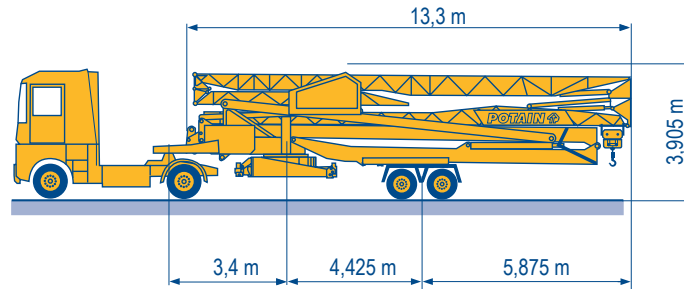
LXW 2



|              | B (m) | C (m) | D (m) | H (m)    |
|--------------|-------|-------|-------|----------|
| DJ80/S120    | 2,5   | 4,95  | 5,35  | 3,4/3,55 |
| DJ100/S120   | 2,5   | 4,95  | 5,35  | 3,45/3,6 |
| DJ105/S125   | 2,5   | 4,95  | 5,35  | 3,45/3,6 |
| DJ126M/S125  | 3,3   | 4,95  | 5,35  | 3,6      |
| DJ126M/S215M | 3,3   | 4,425 | 5,875 | 3,94     |

SL122/J215M

SL121/S215M



**F**  
Chantier

**D**  
Baustelle

**GB**  
Site

**E**  
Obra

**I**  
Cantiere

**P**  
Estaleiro



Document commercial non contractuel. Pour toute information technique se référer à la notice correspondante.

Unverbindliches Vertriebsdokument. Für technische Informationen, siehe die entsprechenden Anweisungen.

This commercial document is not legally binding. For any technical information, please refer to the corresponding instructions.

Documento comercial non contractuel. Para cualquier información técnica, ver la noticia correspondiente.

Documento commerciale non vincolante, per tutte le informazioni tecniche fare riferimento al catalogo istruzioni.

Documento comercial não contratual. Para qualquer informação técnica complementar consultar as respectivas instruções.



18, rue de Charbonnières - B.R.173  
 69132 ECULLY Cedex - France

Tél. : +33 (0) 4 72 18 20 20  
 Fax. : +33 (0) 4 72 18 20 00  
 www.manitowoccrane.com



**Americas**

Tel : +1 888 479 7278  
 Tel : +1 717 593 2000

**Europe - Middle East - Africa**

Tel : +33 (0) 4 72 81 50 00  
 Tel : +44 (0) 191 522 2000

**Asia - Pacific**

Tel : +65 6264 1188  
 Fax : +65 6862 4040

www.manitowoccrane.com



**HD 40 A**

Code L-91985-38\_Réf. 2003 48 LXW 4

Copyright.Reproduction interdite © POTAIN 2003

Réalisation Secloc